



FLUSH JOINT CASING

CME Flush Joint Casing is made with the highest quality 4130 US Steel available.

The high yield strength of this 4130 material helps maintain shape and dimension in extreme load situations.

Its hardness will protect threads and shoulders when hammering through hard formations.

The 4130 material also reduces thread galling.

All threads are machined to DCDMA standards and inspected with certified gages.

Sizes available:

- BW, NW, HW, PW, SW, UW, ZW
- NWT, HWT, PWT, SWT



Please consult the [CME Product Catalog](#) for size specifications.

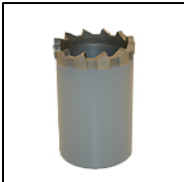
Casing Shoes

Accessories

Drive Shoe



Sawtooth TCI



Diamond Impregnated



Tuff-Kut TCI



Water Tee



Casing Cutter



Wireline Casing Advancer



(click image for larger view)

For more information, call 800-325-8827
or email productupdates@cmeco.com!

DEDICATION QUALITY KNOWLEDGE

CME is dedicated to providing the highest quality products and superior customer service, supported by the most experienced and knowledgeable sales staff in the industry.